

Project Name: _____
 Location: _____
 Engineer: _____
 Submitted to: _____
 Submitted by: _____
 Reference: _____

Approval: _____
 Date: _____
 Construction: _____
 Unit #: _____
 Drawing #: _____

Performance

Indoor Unit Model No: FXMQ48MVJU
Cooling Capacity (Btu/hr): 48000
Sensible Capacity (Btu/hr): 34400
Cooling Input Power (kW): 0.745
Heating Capacity (Btu/hr): 54000
Heating Input Power (kW): 0.745
Nominal Ext Static Pressure (inH2O): 0.72
Max Ext Static Pressure (inH2O): 1

Indoor Unit Type: Duct Mounted Medium Static
Cooling Nominal Conditions Indoor: 80°F DB/67°F WB
 Outdoor: 95°F DB/75°F WB
Heating Nominal Conditions Indoor: 70°F DB/60°F WB
 Outdoor: 47°F DB/43°F WB
Nominal Piping Length 25
Nominal Height Separation 0

Indoor Unit Details

Power Supply (V/Hz/Ph): 208-230/60/1ph
Power Supply Connections: L1, L2, Ground
Min. Circuit Amps MCA (A): 4.4
Max. Fusible Amps MFA (A): 15
Dimensions (HxWxD): 15-3/8x43-3/4x27-1/8
Panel (HxWxD): N/A
Net Weight (lbs): 144
Weight with Panel (lbs): _____

Airflow Rate (CFM wet coil) 1270//1020
Moisture Removal (pt/h): _____
Gas Pipe Connection (inch): 5/8
Liquid Pipe Connection (inch): 3/8
Condensate Connection (inch): 1-1/14
Sound Pressure Level (dBA): 48
Sound Power Level (dBA): 71.6c / 71.7h

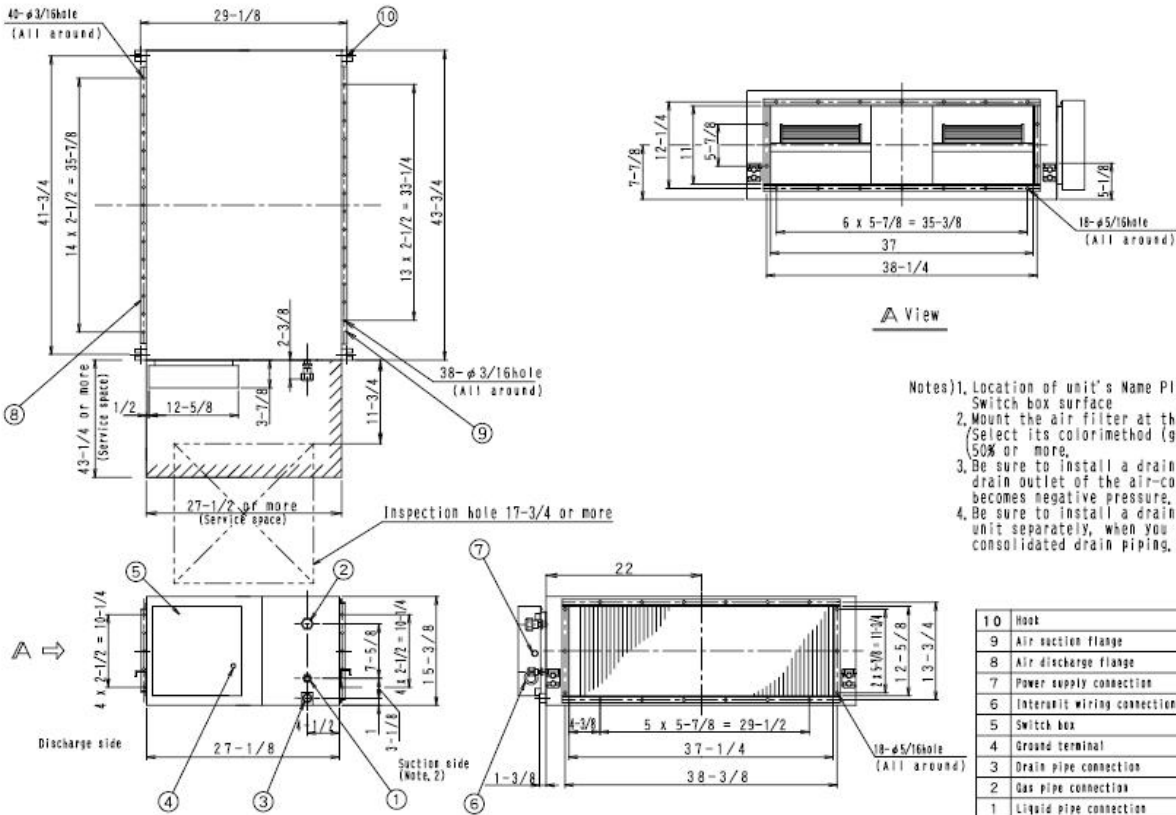
Appearance - Indoor Unit



Project Name: _____
 Location: _____
 Engineer: _____
 Submitted to: _____
 Submitted by: _____
 Reference: _____

Approval: _____
 Date: _____
 Construction: _____
 Unit #: _____
 Drawing #: _____

Dimensional Drawing - Indoor Unit



- Notes)
1. Location of unit's Name Plate: Switch box surface
 2. Mount the air filter at the suction side. (Select its color/method (gravity method)) 50% or more.
 3. Be sure to install a drain trap, as the drain outlet of the air-conditioner becomes negative pressure.
 4. Be sure to install a drain trap for each unit separately, when you install a consolidated drain piping.

10	Hook	For M8-M10
9	Air suction flange	
8	Air discharge flange	
7	Power supply connection	
6	Intermitt wiring connection	
5	Switch box	
4	Ground terminal	M4
3	Drain pipe connection	VP25(O, D, #H, L, S, #)
2	Gas pipe connection	φ5/8 flare connection
1	Liquid pipe connection	φ3/8 flare connection
部番	名称	記号

Project Name: _____
Location: _____
Engineer: _____
Submitted to: _____
Submitted by: _____
Reference: _____

Approval: _____
Date: _____
Construction: _____
Unit #: _____
Drawing #: _____

Notes

Std U.S. Warranty: 6yrs Compressor, 1yrs Parts, 1yr Limited Labor